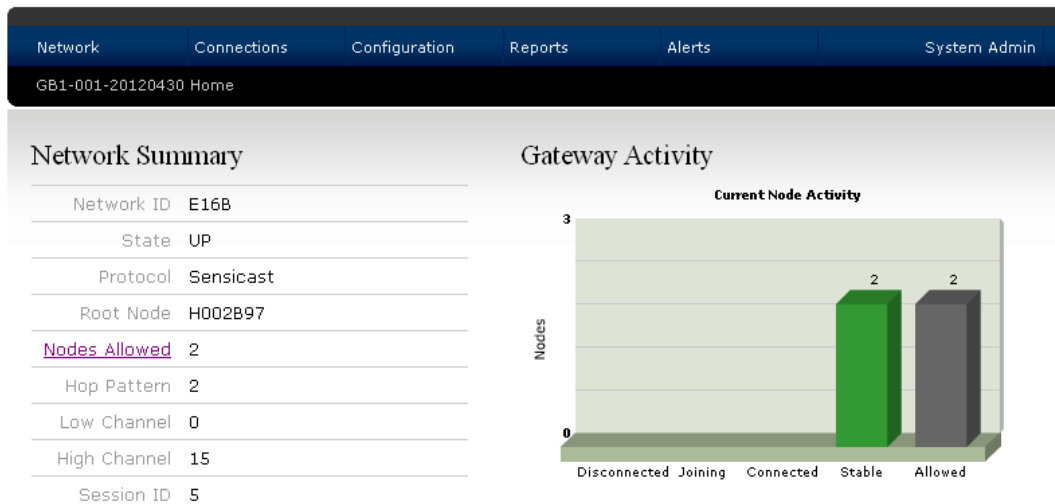
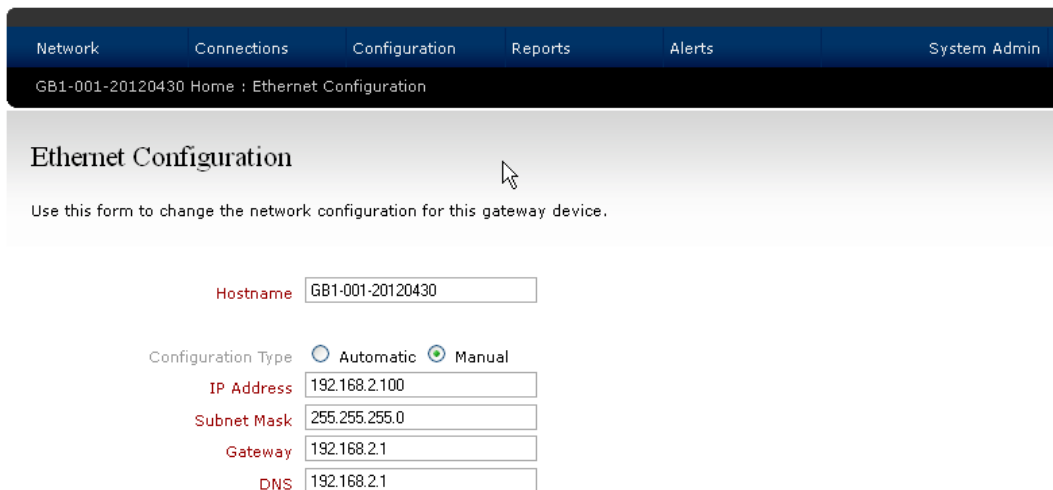


SNMP MIB Example Gateway Version 2.10 GETIF Version 2.2

1. Target Gateway : GB1-001-20120430



2. Gateway Network Configuration



The screenshot shows the Ethernet Configuration page for gateway GB1-001-20120430. The top navigation bar includes Network, Connections, Configuration, Reports, Alerts, and System Admin. The main content area is titled "Ethernet Configuration" and includes the following configuration fields:

Use this form to change the network configuration for this gateway device.

Hostname:

Configuration Type: Automatic Manual

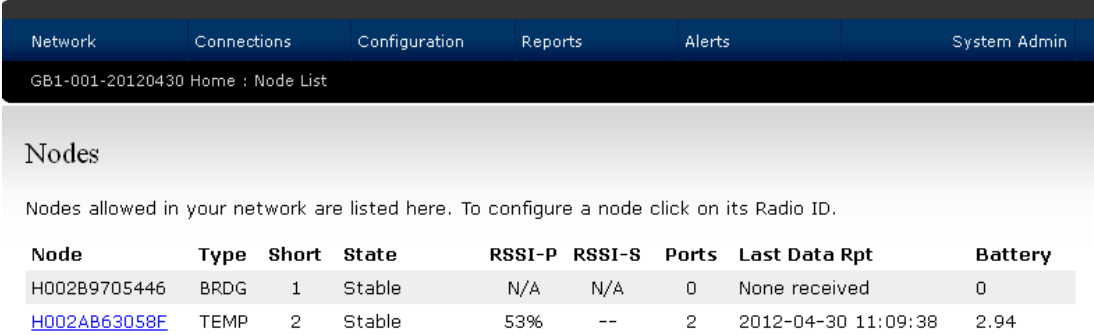
IP Address:

Subnet Mask:

Gateway:

DNS:

3. Smart Sensor Connected



Network Connections Configuration Reports Alerts System Admin

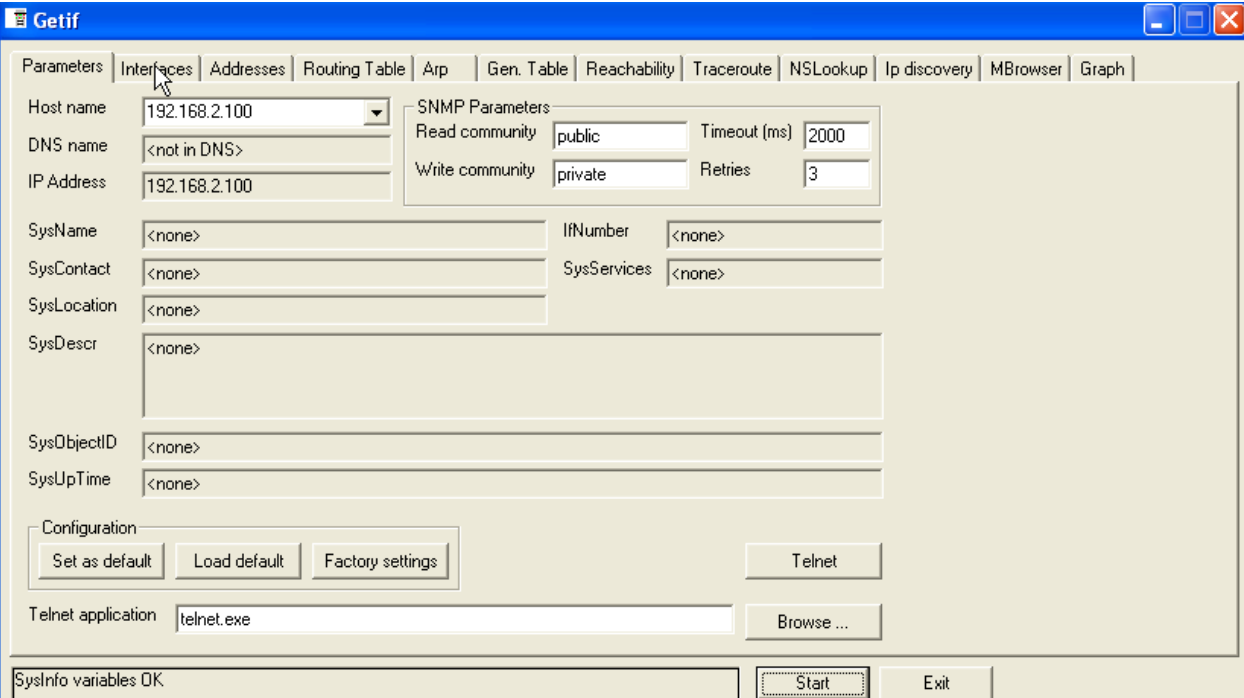
GB1-001-20120430 Home : Node List

Nodes

Nodes allowed in your network are listed here. To configure a node click on its Radio ID.

Node	Type	Short	State	RSSI-P	RSSI-S	Ports	Last Data Rpt	Battery
H002B9705446	BRDG	1	Stable	N/A	N/A	0	None received	0
H002AB63058F	TEMP	2	Stable	53%	--	2	2012-04-30 11:09:38	2.94

4. GETIF Version 2.2 Configuration



Getif

Parameters | Interfaces | Addresses | Routing Table | Arp | Gen. Table | Reachability | Traceroute | NSLookup | Ip discovery | MBrowser | Graph

Host name: 192.168.2.100

DNS name: <not in DNS>

IP Address: 192.168.2.100

SNMP Parameters

Read community: public Timeout (ms): 2000

Write community: private Retries: 3

SysName: <none> IfNumber: <none>

SysContact: <none> SysServices: <none>

SysLocation: <none>

SysDescr: <none>

SysObjectID: <none>

SysUpTime: <none>

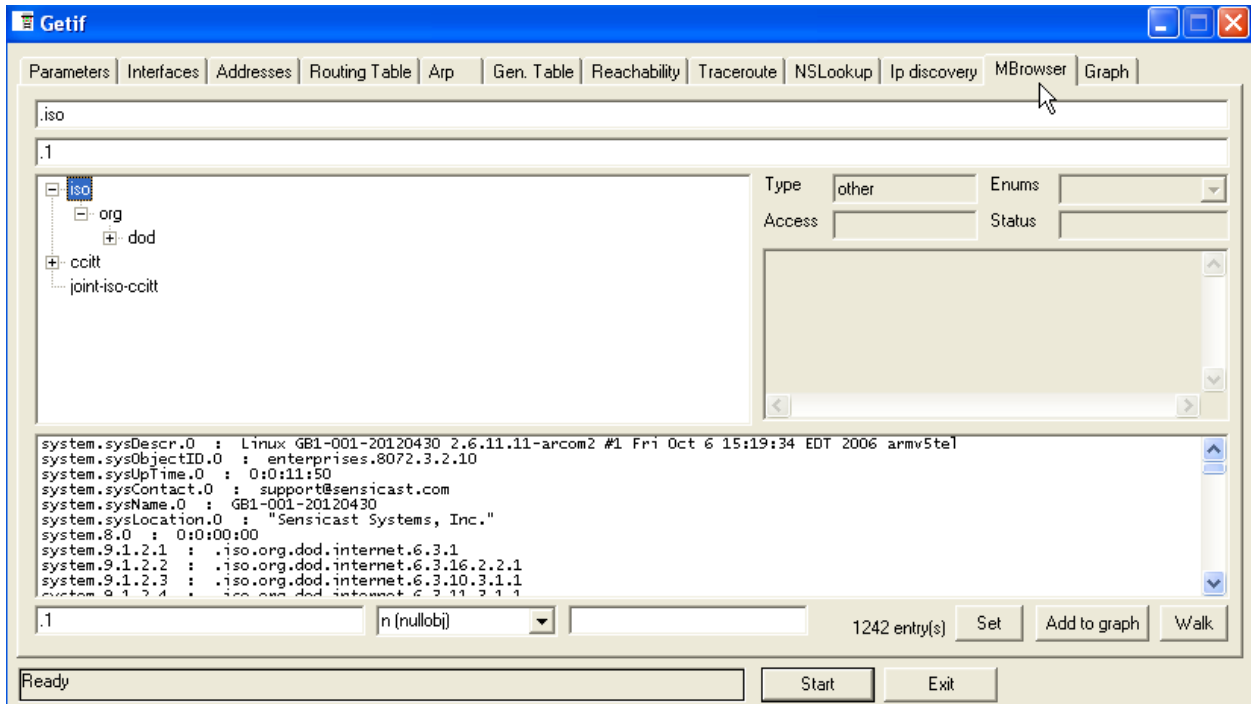
Configuration

Set as default Load default Factory settings Telnet

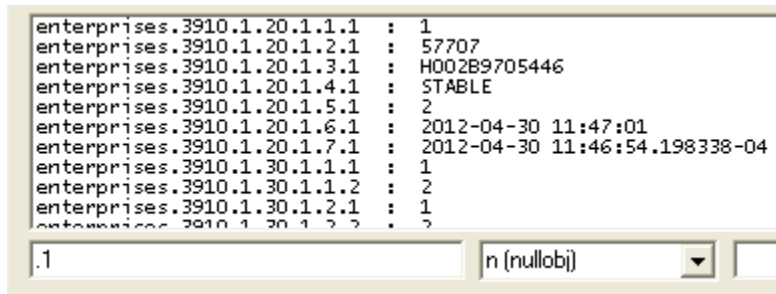
Telnet application: telnet.exe Browse ...

Sysinfo variables OK Start Exit

5. GETIF MIB Walker Set up



6. Gateway MIB Report – (Gateway Node Address – H002B9705446)



7. Node Status Report – Gateway GUI and GETIF MIB Report

- a. 3910.1.30.1.4.X = Node MAC
- b. 3910.1.30.1.5.X = Short Address
- c. 3910.1.30.1.6.X = Node Type
- d. 3910.1.30.1.7.X = Status (4=stable)
- e. 3910.1.30.1.8.X = Battery Voltage

Node	Type	Short	State	RSSI-P	RSSI-S	Ports	Last Data Rpt	Battery
H002B9705446	BRDG	1	Stable	N/A	N/A	0	None received	3.3
H002AB63058F	TEMP	4	Stable	58%	--	2	2012-04-30 11:50:59	2.93

```

enterprises.3910.1.30.1.4.1 : H002B9705446
enterprises.3910.1.30.1.4.2 : H002AB63058F
enterprises.3910.1.30.1.5.1 : 1
enterprises.3910.1.30.1.5.2 : 4
enterprises.3910.1.30.1.6.1 : BRDG
enterprises.3910.1.30.1.6.2 : TEMP-1xxx
enterprises.3910.1.30.1.7.1 : 4
enterprises.3910.1.30.1.7.2 : 4
enterprises.3910.1.30.1.8.1 : 3.30
enterprises.3910.1.30.1.8.2 : 2.93
enterprises.3910.1.30.1.8.3 : 0
  
```

8. Node Data Report – Gateway GUI and GETIF MIB Report

- a. 3910.1.30.1.13.X = Type
- b. 3910.1.30.1.14.X = Reading (divided by 100)
- c. 3910.1.30.1.15.X = Engineering Units
- d. 3910.1.30.1.16.X = Time Stamp

Recent Sensor Data

Location	Tag	Node	Port	Reading	Timestamp
		H002AB63058F	Temperature-1	20.16 C	2012-04-30 11:56:00

```

enterprises.3910.1.30.1.13.2 : TEMP
enterprises.3910.1.30.1.14.1 : 0
enterprises.3910.1.30.1.14.2 : 2016
enterprises.3910.1.30.1.15.1 : ""
enterprises.3910.1.30.1.15.2 : degrees Celsius
enterprises.3910.1.30.1.16.1 : ""
enterprises.3910.1.30.1.16.2 : 2012-04-30 11:55:32.628204-04
enterprises.3910.1.30.1.17.1 : ""
enterprises.3910.1.30.1.17.2 : ""
enterprises.3910.1.30.1.18.1 : 0
enterprises.3910.1.30.1.18.2 : 0
  
```

.1 n (nullobj) ▾