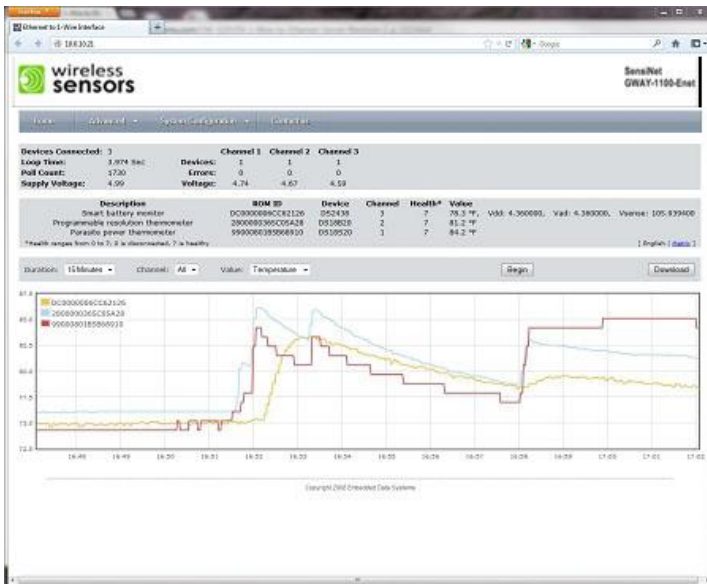


Rack Sentry Ethernet Gateway

The SensiNet Ethernet Gateway is an environmental monitoring system ideal for small computer rooms, network closets or other locations where an inexpensive, easy to deploy system is required. The GWAY-1100 supports sensors for temperature, humidity and other critical parameters which can be mixed and matched to the needs of each installation through a unique daisy chained digital bus. Simply plug in the sensors and you're up and running. An Ethernet connection completes the installation and makes critical data accessible to DCIM, Network Management and BMS systems or the GWAY-1100's on board web server provides real time monitoring and trending for stand alone applications. Sensors are interchangeable with Rack Sentry Wireless nodes allowing the system to scale from a single closet to the largest enterprise.



- Supports up to 24 sensors
- Web Browser data views and trending
- Operates "stand-alone" or integrates with DCIM or BMS
- Reads all active devices every 2 seconds
- Firmware can be flash upgraded from remote
- Each node supports 3 separate 1-Wire networks
- 1-Wire MicroLan capacity of 1000 feet of cable, 24 devices
- ESD Protection more than 27kV on the 1-Wire bus
- LED indicators for link activity, power, and 1-Wire activity

Specifications	
Communication	10/100 BASE-T Ethernet
Network Protocols	HTTP, HTTP POST, SNMP, SNMP Traps, TCP Socket, Multicast,
IP Addressing	DHCP or Static IP
Primary Power	5VDC +/- 10% Mini USB connection
Power Consumption	245 mA base plus sensor load
Operating temperature	-40 C to 85 C
Operating humidity	0-90% RH
Sensor Protocol	Maxim One Wire
Sensor Update Interval	One reading every two seconds
Maximum Sensors	24
Sensor Networks	3
Sensor Connections	RJ12 X 3
Enclosure Specifications	
Enclosure rating	NEMA 1
Size	140mm x 86mm x 32mm